

jaga

CLIMATE DESIGNERS



DBH UPGRADE SET

€ 2020.EX

jaga

CLIMATE DESIGNERS

DBH UPGRADE SET

The easiest way to an environmentally friendly HVAC installation

- **switch to low temperature heating with heat pump or low temperature boiler**
- **suitable for environmentally friendly light cooling (non-condensing)**
- **with breeze feature**
- **easy installation on all Jaga Low-H₂O heating units**

The DBH Upgrade set is a booster that was specially developed for Jaga Low-H₂O heating units in order to increase the power and to enable low energy consumption cooling. This set makes it possible to greatly reduce the water temperature of your C.V. installation without having to install larger heating units or having to modify the pipes. Upgrading your existing Jaga heating units with the DBH set is the easiest option towards a low temperature installation or an emission-free heat pump installation for both heating and light cooling.

Also suitable
for Jaga light
cooling

“From the designers of the first low temperature heater.”



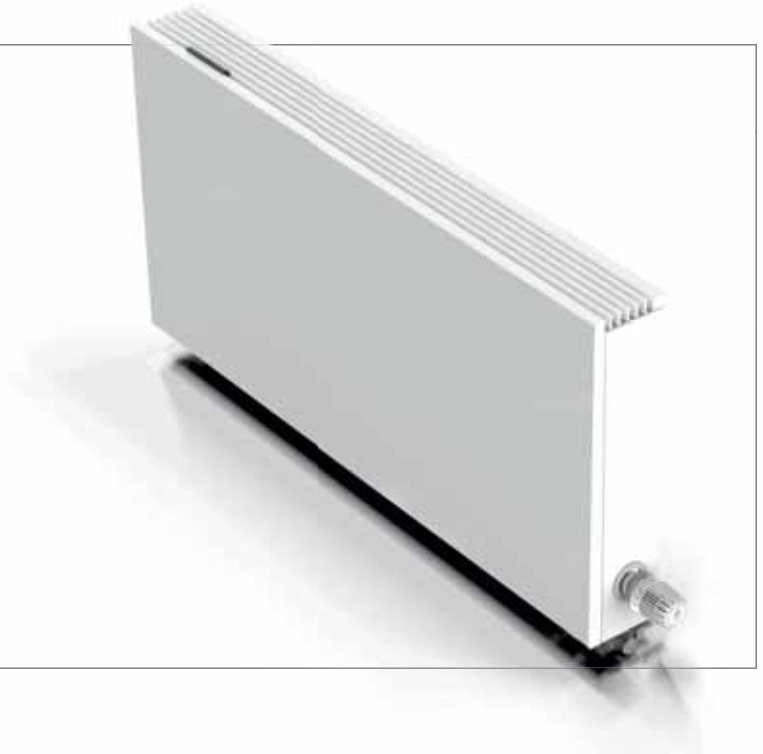
ERS

DBH 

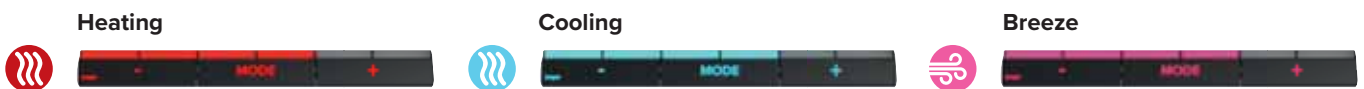

DBH UPGRADE SET

TURN YOUR STANDARD JAGA HEATING UNIT INTO AN ENVIRONMENTALLY FRIENDLY POWERHOUSE

- Efficient and effortless heating with the lowest water temperature
- Energy-efficient non-condensing cooling in combination with any heat pump that can supply cooling water
- Improves the seasonal efficiency of each heat pump
- Makes sure that the condensing boilers are operating at their lowest temperature and as efficiently as possible.



MULTIFUNCTIONAL INTELLIGENCE



DBH SWITCHES FULLY AUTOMATICALLY BETWEEN HEATING AND LIGHT COOLING

Auto-change-over mode (standard)

You do not have to do anything at all to switch between heating and cooling down. Due to its accurate room – and water temperature sensors, the hybrid is fully automated. To achieve the requested temperature you can set 3 different fan speeds, depending on the room where the heating unit is located: bedroom

mode max. 26 dB(A), comfort mode max. 30 dB(A) or maximum mode for rapid heating and cooling.

With breeze feature

The Hybrid heater's DBH system can also be activated if there is no cooling water, so without a heat pump. The vicinity of the heater can already feel less warm with just the air movement of the fans.

EEN RENOVATIEVOORBEELD VOOR/NA

FOR

AFTER

Heating only



Strada H50 L100 Type 11



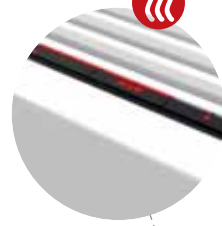
Heating



Breeze



Cooling



Light cooling®
for all heat pumps
with cooling function

Strada H50 L100 Type 11 + DBH set type 10



Click on
DBH-units

OUTPUTS **WITHOUT** DBH

TEMP. PROFILE

75/65 1386 WATTS

55/45 665 WATTS

45/35 388 WATTS

OUTPUT **WITH** DBH

TEMP. PROFILE

POSITION 2 POSITION 3

55/45 1312 WATTS 1611 WATTS

45/35 840 WATTS 1031 WATTS

35/30 501 WATTS 615 WATTS

COOLING **WITH**
DBH

473 WATTS
at temp. profile
16/18/27°

Also suitable
for Jaga light
cooling

DBH UPGRADE CONFIGURATOR

FOR WHICH RADIATORS?



Almost all Jaga Low-H₂O heating units can be equipped with the DBH Upgrade set:
 Strada, Linea Plus, Tempo, Installation in a wall recess
 For more info on the DBH Upgrade Set, see www.jaga.com/Products/Horizontal/dbh-upgrade

HOW DO I CHOOSE THE RIGHT SET?

Measure the width and length of your Low-H₂O heating unit.
 Thickness 11,5 cm = DBH unit type 10
 Thickness 16,5 cm en 21,5 cm = DBH unit type 15
 The length of the cover determines how long the DBH-set should be.

DBH UNIT 10

- Suitable for type 10 and 11:
- Strada
 - Linea Plus
 - Tempo
 - Installation in a wall recess



DBH UNIT 15

- Suitable for type 15,16, 20 and 21:
- Strada
 - Linea Plus
 - Tempo
 - Installation in a wall recess



TYPE 10

TYPE 11



TYPE 15

TYPE 16

TYPE 20

TYPE 21

REPLACEMENT OF OTHER HEATING UNITS

Regular panel heaters are not suitable for a DBH- upgrade. You can, however, replace it with a Jaga heating unit that has same dimensions as the old heating unit. This way you can switch to a heating unit that is powerful enough to run at lower water temperatures without losing space to an extra or a larger heating unit.
 For all info on Strada Hybrid (incl. DBH system) see www.jaga.com/strada/hybrid

75/65



55/45



EASY INSTALLATION

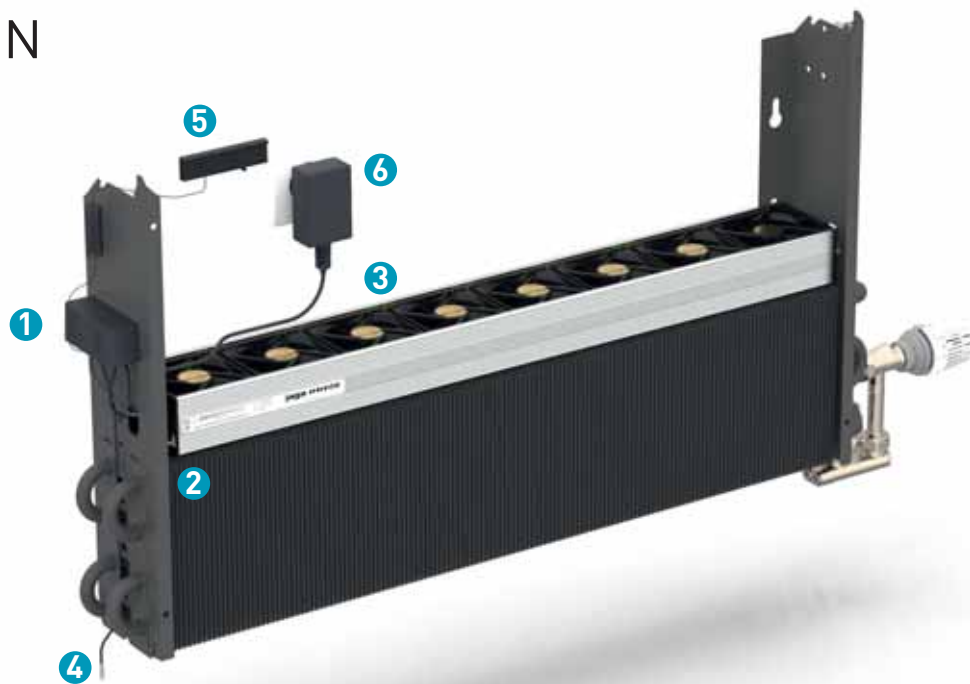
OPERATION OF THE DBH SYSTEM

Standard Auto-change-over mode

The desired room temperature is set via a room thermostat or the heating unit's thermostat head. The DBH set has accurate sensors for both the room and water temperature. DBH automatically switches between standby / heating / cooling based on the measured values.

- suitable for heating or heating and cooling with the thermostat head HC or the manual button MA.
- noise level monitoring, officially measured according to ISO 3741: 2010
- With breeze feature for a fan effect, does not depend on the water temperature.
- Colored LEDs indicate the feature and the fan speed.

⚠ Het DBH-systeem zal niet controleren de warmtepomp of de boiler en kan daarom niet vervangen worden voor een kamerthermostaat



NEGLIGIBLE ELECTRICITY CONSUMPTION

The DBE system is no fan convector, and certainly not an electric radiator! In operation, the electricity consumption is no more than 7 watts/metre. The annual consumption is negligible and is more than compensated by the energy efficiency of the Low-H₂O technology in the radiator.



1 Stick the controller against the console.



2 Click the water temperature sensor on the coil.



3 Connect the DBH unit to the controller and click it on the coil



4 Fix the room temperature sensor.



5 Put the cover back on the heating unit, but without the grille. Place the controls on the front panel.



6 Put the plug in the wall socket and put the grille back on the heating unit

NOISE AND POWER ACCORDING TO THE LATEST EUROPEAN STANDARDS

The heat output of Jaga radiators with DBH was measured according to the latest European standards regarding heating units with integrated fans. Jaga is one of the first to comply with the new reference standard **EN 16430**. The sound power (L_w) of the DBH is measured in accordance with **ISO 3741:2010**. As is customary for the sound pressure (L_p), room attenuation of 8 dB(A) is assumed for room content of 100 m³ and a reverberation time of 0.5 sec.

HOW TO SELECT DBH?

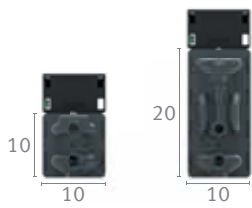
DBH is selected in **comfort mode, position 2** in bold in the output tables. This guarantees a quiet operation at a maximum of 30 dB(A). Position 1 is an extremely quiet bedroom setting with a maximum of 26 dB(A). Position 3 provides a maximum boost and the very high output serves primarily to heat up and cool down a room as quickly as possible. In this mode the noise is between 42 and 46 dB(A).

How loud is a decibel?

dB(A)	Perception	Examples
10	hardly to hear	breathing, a falling leaf
20	just audible	radio studio, rustling of tree leaves
30	very quiet	library (30 to 40), whispering
40	quiet	living room, quiet classroom, soft buzz, fridge
50	limited sound	air conditioning, normal conversation, dishwasher

DBH SET 10 + LOW-H₂O TYPE 10 / TYPE 11

TYPE 10 TYPE 11



STANDARD DELIVERY

- DBH unit(s)
- control board with microcontroller and remote control
- AC adapter 230 V/ 24VDC

DBH SET 10

WATTS WITH TYPE 10

WATTS WITH TYPE 11

DBHS.	LENGTH RADIATOR DBH UNIT		POSITION	SOUND PRES-SURE dB(A)	ELECTRICITY CONSUMPTION W	€	HEATING Room temperature 20°C			COOLING Room temperature 27°C		HEATING Room temperature 20°C			COOLING Room temperature 27°C	
	LLL	BB /ACO					1	2	3	16/18	20/22	55/45	45/35	35/30	16/18	20/22
DBHS. 050	10	/ACO	1			240,00										
			2													
			3													
DBHS. 060	10	/ACO	1			261,00										
			2													
			3													
DBHS. 070	10	/ACO	1			268,00										
			2													
			3													
DBHS. 080	10	/ACO	1			278,00										
			2													
			3													
DBHS. 090	10	/ACO	1			335,00										
			2													
			3													
DBHS. 100	10	/ACO	1			344,00										
			2													
			3													
DBHS. 110	10	/ACO	1			365,00										
			2													
			3													
DBHS. 120	10	/ACO	1			371,00										
			2													
			3													
DBHS. 140	10	/ACO	1			397,00										
			2													
			3													
DBHS. 160	10	/ACO	1			505,00										
			2													
			3													
DBHS. 180	10	/ACO	1			529,00										
			2													
			3													
DBHS. 200	10	/ACO	1			570,00										
			2													
			3													
DBHS. 220	10	/ACO	1			608,00										
			2													
			3													
DBHS. 240	10	/ACO	1			700,00										
			2													
			3													
DBHS. 260	10	/ACO	1			741,00										
			2													
			3													
DBHS. 280	10	/ACO	1			741,00										
			2													
			3													

Output measured in accordance with EN 16430

SUITABLE FOR TYPE 10 & TYPE 11:

Strada



Linea Plus



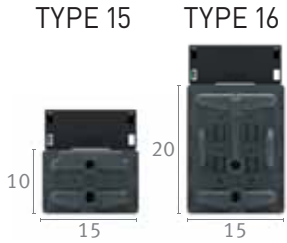
Tempo



Installation in a wall recess

For more info on the DBH Upgrade Set, see www.jaga.com/Products/Horizontal/dbh-upgrade

DBH SET 15 + LOW-H₂O TYPE 15 / TYPE 16



STANDARD DELIVERY

- DBH unit(s)
- control board with microcontroller and remote control
- AC adapter 230 V/ 24VDC

SUITABLE FOR TYPE 10 & TYPE 11:

Strada



Linea Plus



Tempo



Installation in a wall recess

For more info on the DBH Upgrade Set, see www.jaga.com/Products/Horizontal/dbh-upgrade

DBH SET 15

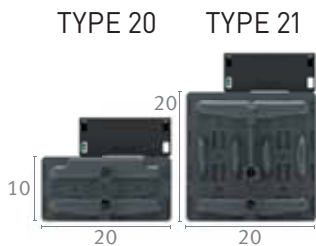
WATTS WITH TYPE 15

WATTS WITH TYPE 16

DBHS.	LENGTH RADIATOR		DBH UNIT	POSITION	SOUND PRESSURE dB(A)	ELECTRICITY CONSUMPTION W	€	HEATING Room temperature 20°C			COOLING Room temperature 27°C						
	LLL	BB /ACO						1	2	3	16/18	20/22	55/45	45/35	35/30	16/18	20/22
DBHS. 050	15	/ACO	15	1			240,00										
				2													
				3													
DBHS. 060	15	/ACO	15	1			265,00										
				2													
				3													
DBHS. 070	15	/ACO	15	1			273,00										
				2													
				3													
DBHS. 080	15	/ACO	15	1			283,00										
				2													
				3													
DBHS. 090	15	/ACO	15	1			345,00										
				2													
				3													
DBHS. 100	15	/ACO	15	1			361,00										
				2													
				3													
DBHS. 110	15	/ACO	15	1			381,00										
				2													
				3													
DBHS. 120	15	/ACO	15	1			386,00										
				2													
				3													
DBHS. 140	15	/ACO	15	1			412,00										
				2													
				3													
DBHS. 160	15	/ACO	15	1			536,00										
				2													
				3													
DBHS. 180	15	/ACO	15	1			567,00										
				2													
				3													
DBHS. 200	15	/ACO	15	1			592,00										
				2													
				3													
DBHS. 220	15	/ACO	15	1			641,00										
				2													
				3													
DBHS. 240	15	/ACO	15	1			742,00										
				2													
				3													
DBHS. 260	15	/ACO	15	1			762,00										
				2													
				3													
DBHS. 280	15	/ACO	15	1			803,00										
				2													
				3													

Output measured in accordance with EN 16430

DBH SET 15 + LOW-H₂O TYPE 20 / TYPE 21



STANDARD DELIVERY

- DBH unit(s)
- stuurprint met microcontroller en bediening
- AC adapter 230 V/ 24VDC

SUITABLE FOR TYPE 10 & TYPE 11:

Strada



Linea Plus



Tempo



Installation in a wall recess

For more info on the DBH Upgrade Set, see www.jaga.com/Products/Horizontal/dbh-upgrade

DBH SET 15		WATTS WITH TYPE 20			WATTS WITH TYPE 21										
DBHS.	LENGTH RADIATOR DBH UNIT LLL BB /ACO	POSITION	SOUND PRESSURE dB(A)	ELECTRICITY CONSUMPTION W	HEATING Room temperature 20°C			COOLING Room temperature 27°C							
					55/45 Watts	45/35 Watts	35/30 Watts	16/18 Watts	20/22 Watts	55/45 Watts	45/35 Watts	35/30 Watts	16/18 Watts	20/22 Watts	
DBHS. 050	15 /ACO	1		240,00											
		2													
		3													
DBHS. 060	15 /ACO	1		265,00											
		2													
		3													
DBHS. 070	15 /ACO	1		273,00											
		2													
		3													
DBHS. 080	15 /ACO	1		283,00											
		2													
		3													
DBHS. 090	15 /ACO	1		345,00											
		2													
		3													
DBHS. 100	15 /ACO	1		361,00											
		2													
		3													
DBHS. 110	15 /ACO	1		381,00											
		2													
		3													
DBHS. 120	15 /ACO	1		386,00											
		2													
		3													
DBHS. 140	15 /ACO	1		412,00											
		2													
		3													
DBHS. 160	15 /ACO	1		536,00											
		2													
		3													
DBHS. 180	15 /ACO	1		567,00											
		2													
		3													
DBHS. 200	15 /ACO	1		592,00											
		2													
		3													
DBHS. 220	15 /ACO	1		641,00											
		2													
		3													
DBHS. 240	15 /ACO	1		742,00											
		2													
		3													
DBHS. 260	15 /ACO	1		762,00											
		2													
		3													
DBHS. 280	15 /ACO	1		803,00											
		2													
		3													

Output measured in accordance with EN 16430

jaga
CLIMATE
DESIGNERS

Jaga International
Verbindingslaan 16
B-3590 Diepenbeek

Tel.: +32 (0)11 29 41 12
Fax: +32 (0)11 29 41 60
export@jaga.com

The information in this price list is correct at the time of printing.
Jaga reserves the right to change product specification at any time in line
with our policy of continuous improvement and innovation.
All prices in Euro, exclude VAT. Prices valid from 1st January 2020.
Replaces all existing price lists.